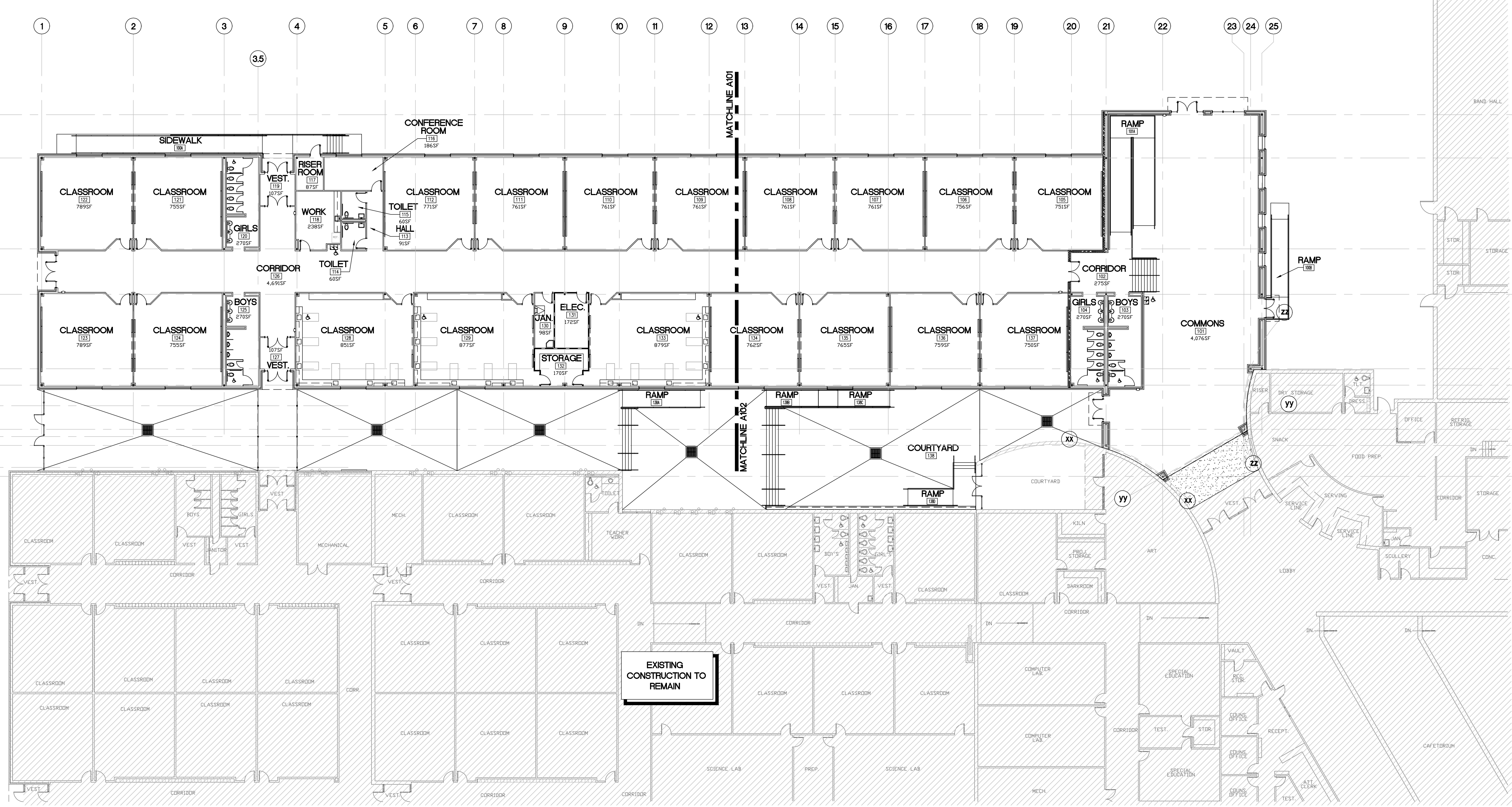


GENERAL NOTES

CONTRACTOR SHALL MAINTAIN ALL UTILITIES, INCLUDING POWER, DATA, TELEPHONE, FIRE SPRINKLER SYSTEM, SEWER and ALARM SYSTEMS at ALL TIMES DURING CONSTRUCTION WHEN SCHOOL IS IN SESSION - WORK REQUIRING SHUT DOWN of UTILITIES SHALL be SCHEDULED for TIMES WHEN SCHOOL is NOT in SESSION



PRELIMINARY

PRELIMINARY

CADCO

ARCHITECTS - ENGINEERS, INC.
2401 S. WILLIS, STE. 200 ABILENE, TEXAS 79605

WYLIE HIGH SCHOOL
NEW CLASSROOM BUILDING
WYLIE I.S.D.
ABILENE, TEXAS

PROJECT NUMBER: A646
OCTOBER 1, 2015

A100

M1 OVERALL FLOOR PLAN - 29,405 GSF (enclosed area only)

1" = 20'-0"

